

Sample Hospital
Swing Bed Report

For the Period:
Oct 2020 through Apr 2021

Table of Contents

[A] Management Report

| | |
|--|--------------------|
| Admission, Discharge and Total Days Summary | 1 |
| Discharges & Exclusions by Hospital | 2 |
| Average Length Stay | 3 |
| Average Daily Census | 4 |
| Entered From by % of Discharges | 5 |
| Primary Payor as a % of Discharges | 6 |
| Age Group as a % of Discharges | 7 |
| Primary Medical Condition as a % of Discharges | 8 |
| ALOS by Primary Medical Condition | 9 |
| Discharges by Therapy Received | 10 |
| Discharges by Therapy Discipline Received | 11 |

[B] Exclusion Breakdown

| | |
|--------------------------------------|--------------------|
| Exclusions by Reason | 12 |
|--------------------------------------|--------------------|

[C] Functional Outcome

| | |
|---|--------------------|
| Performance Improvement Score - Self Care (Without Exclusions) | 13 |
| Self-Care Improvement by Primary Medical Condition (Without Exclusions) | 14 |
| Performance Improvement Score - Mobility (Without Exclusions) | 15 |
| Mobility Improvement by Primary Medical Condition (Without Exclusions) | 16 |

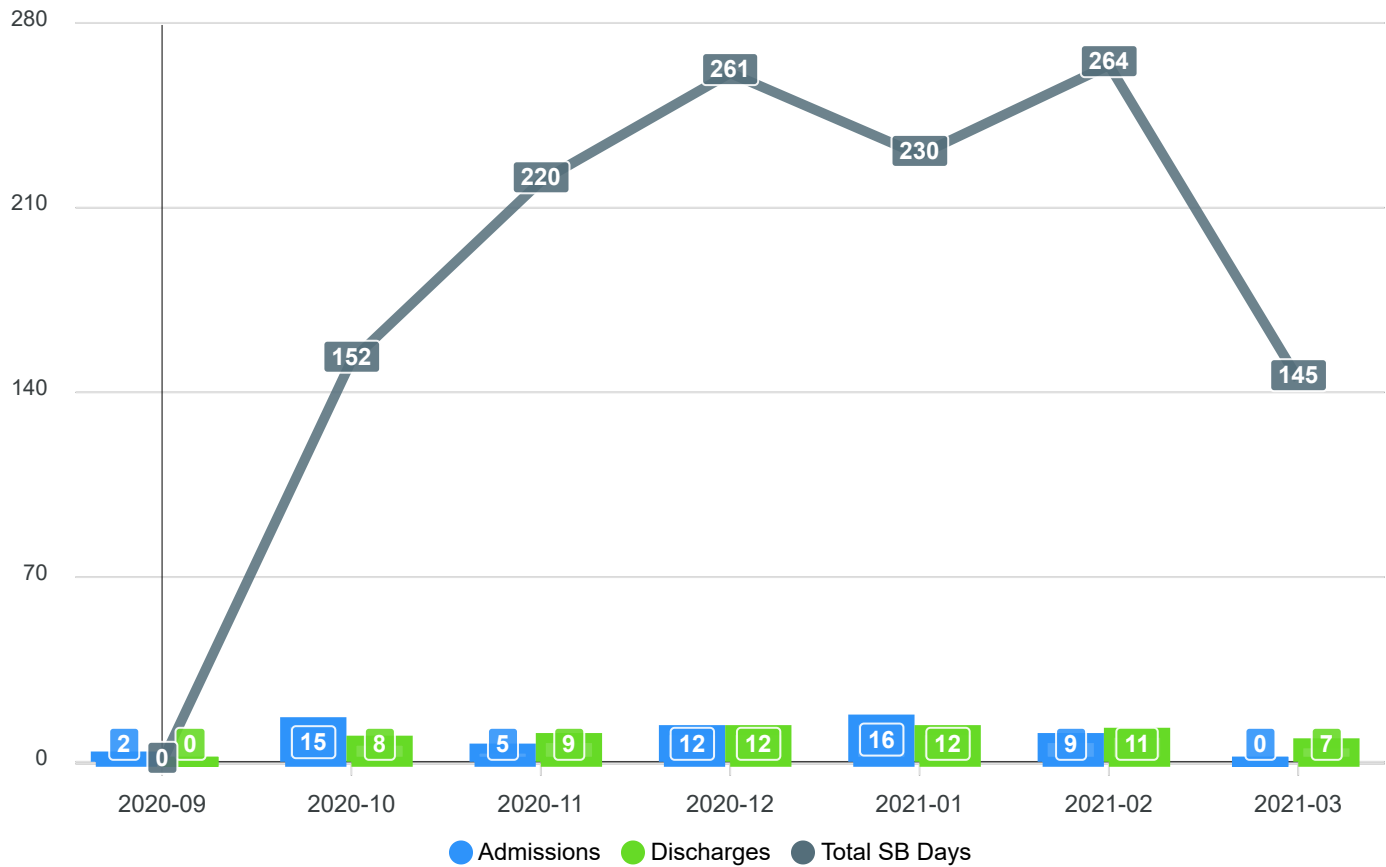
[D] Discharge Data

| | |
|---|--------------------|
| Discharges by Discharge Disposition | 17 |
| Post Swing Bed 30 Day Discharge Follow-up | 18 |

Admission, Discharge and Total Days Summary

Time period (Oct 2020 - Apr 2021)

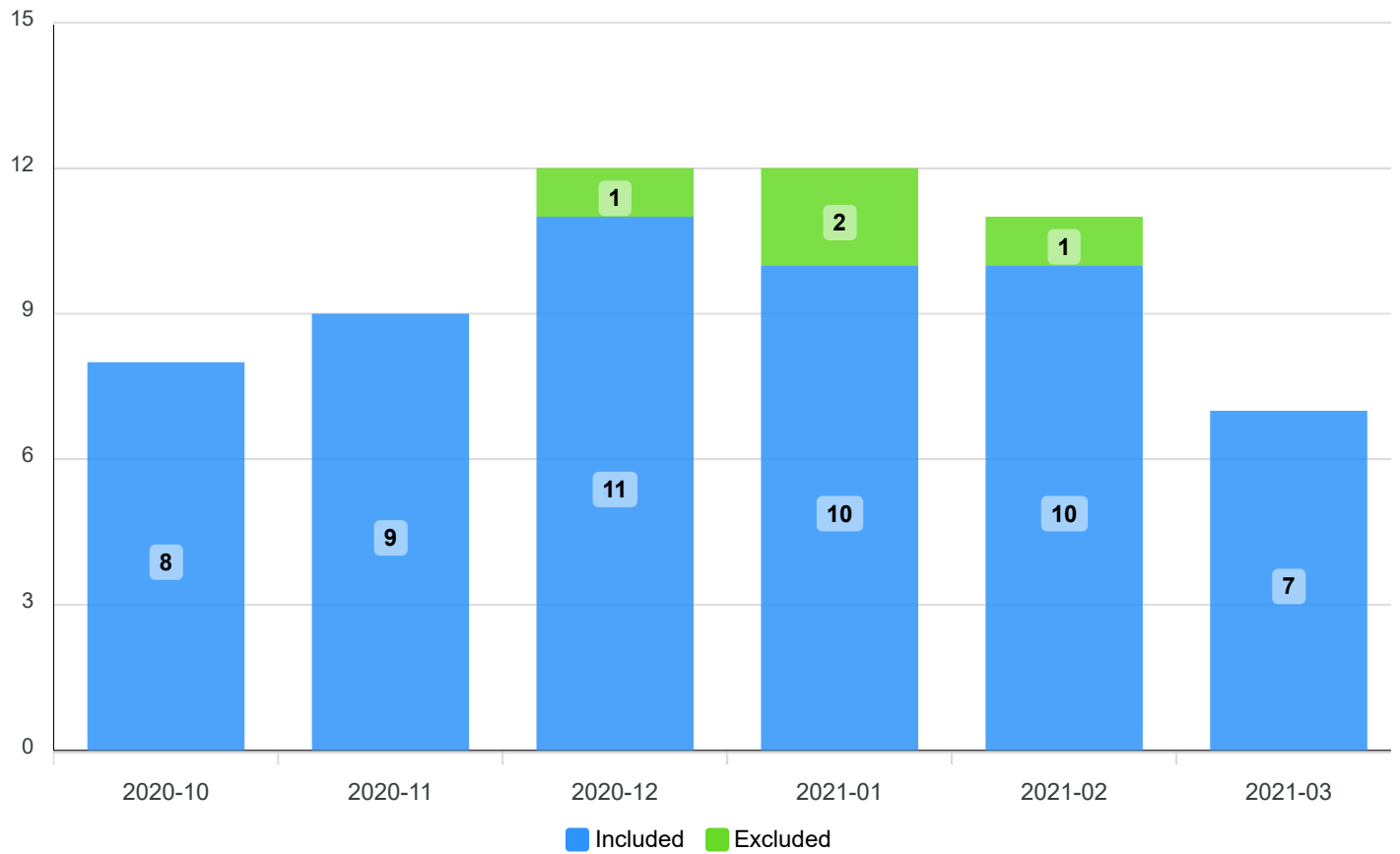
LOS is calculated for each patient (discharge date - admission date) then is summed for the total days



Discharges & Exclusions by Hospital

Time period (Oct 2020 - Apr 2021)

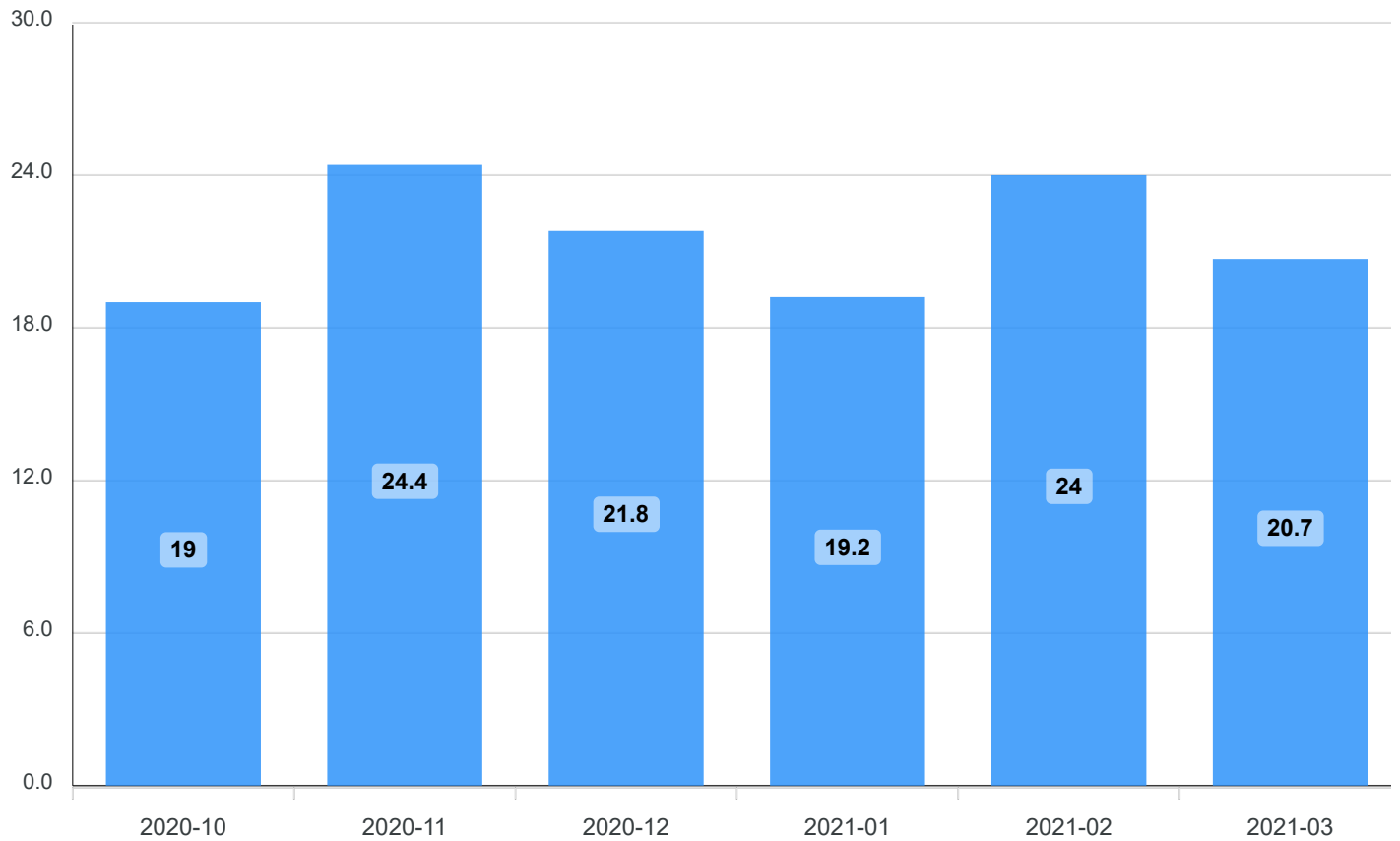
Total number of discharges (# in blue) which includes the number of exclusions (green)



Average Length Stay

Time period (Oct 2020 - Apr 2021)

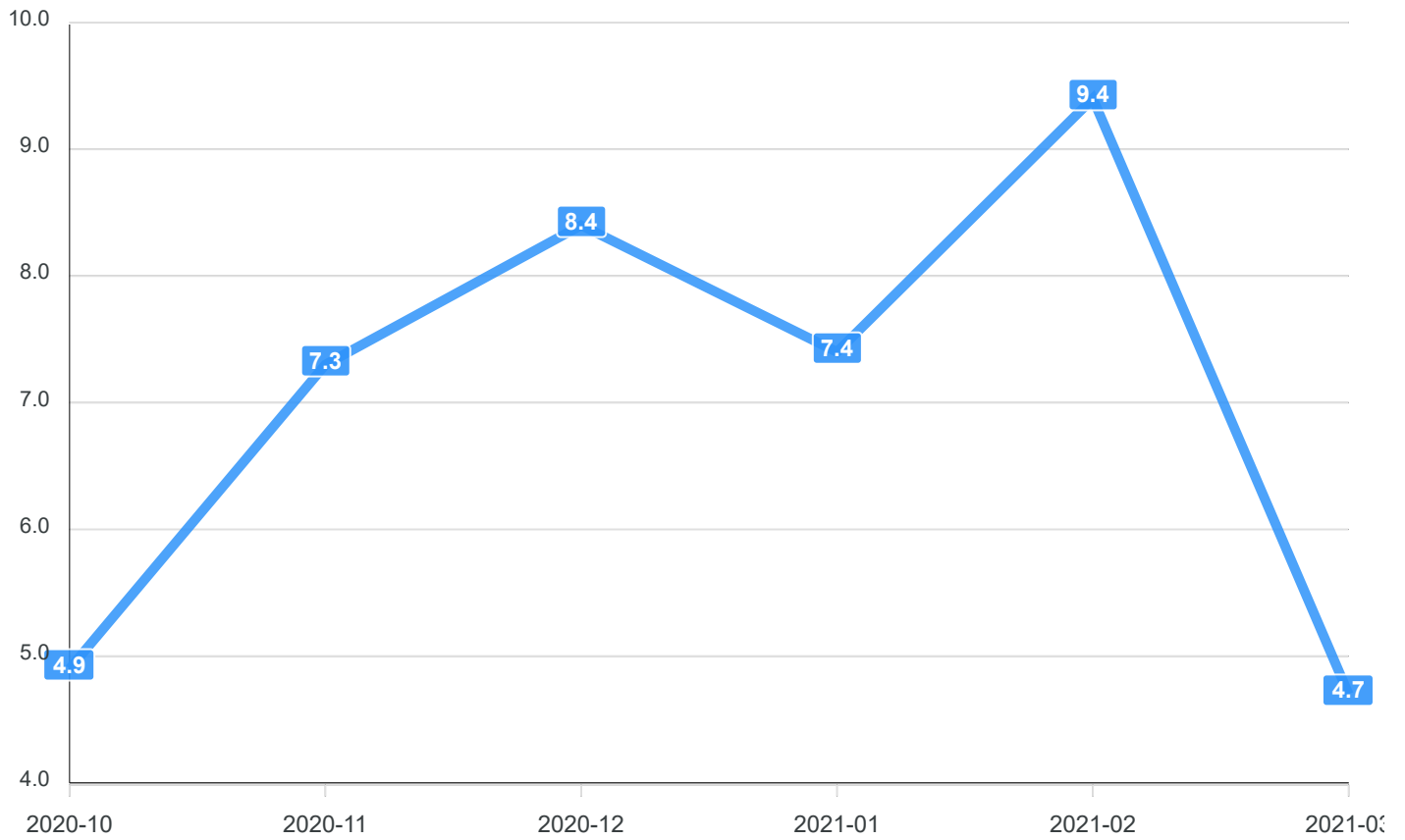
LOS is calculated for each patient (discharge date - admission date) then is averaged for the ALOS



Average Daily Census

Time period (Oct 2020 - Apr 2021)

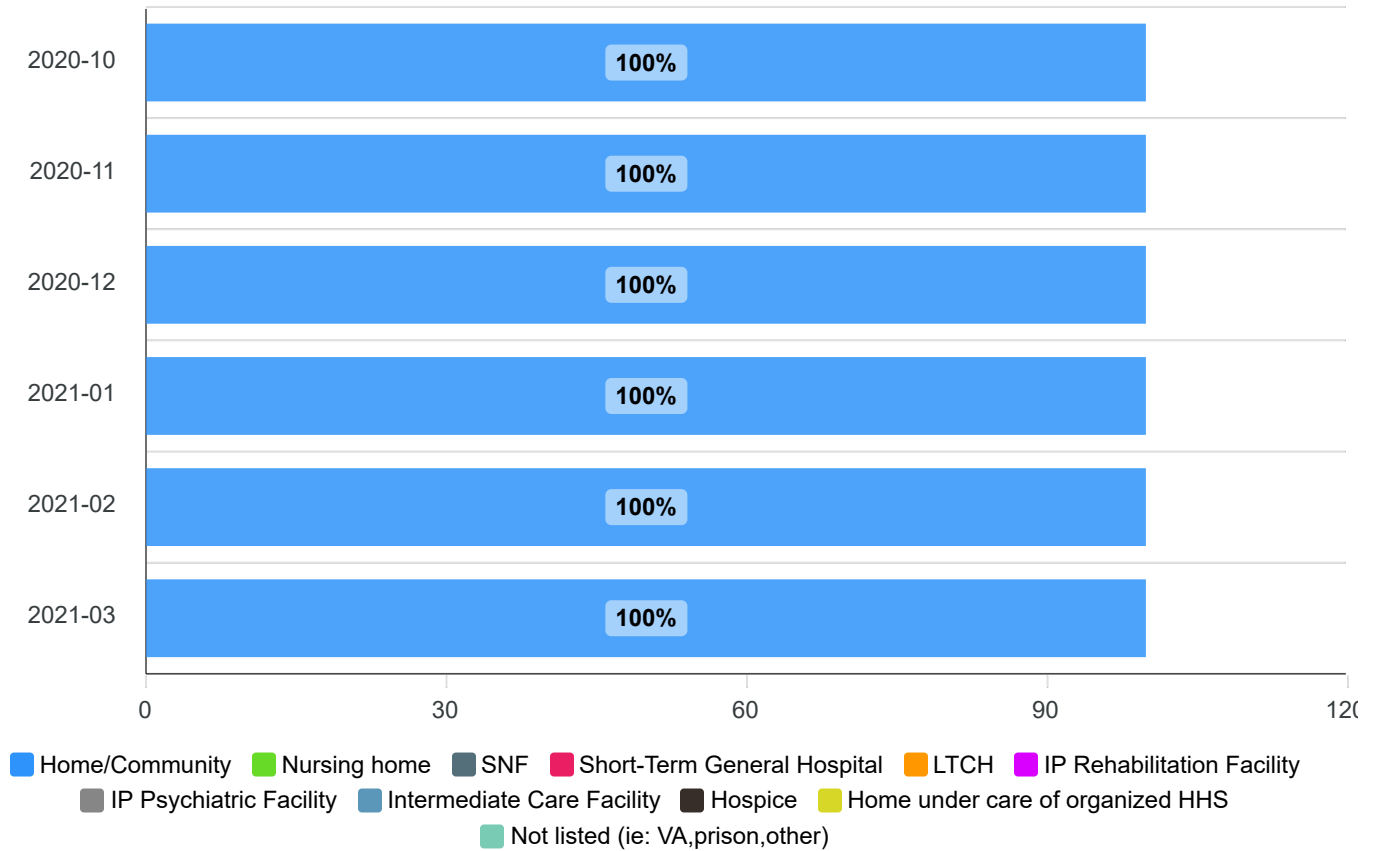
ADC is total swing bed days divided by calendar days



Entered From by % of Discharges

Time period (Oct 2020 - Apr 2021)

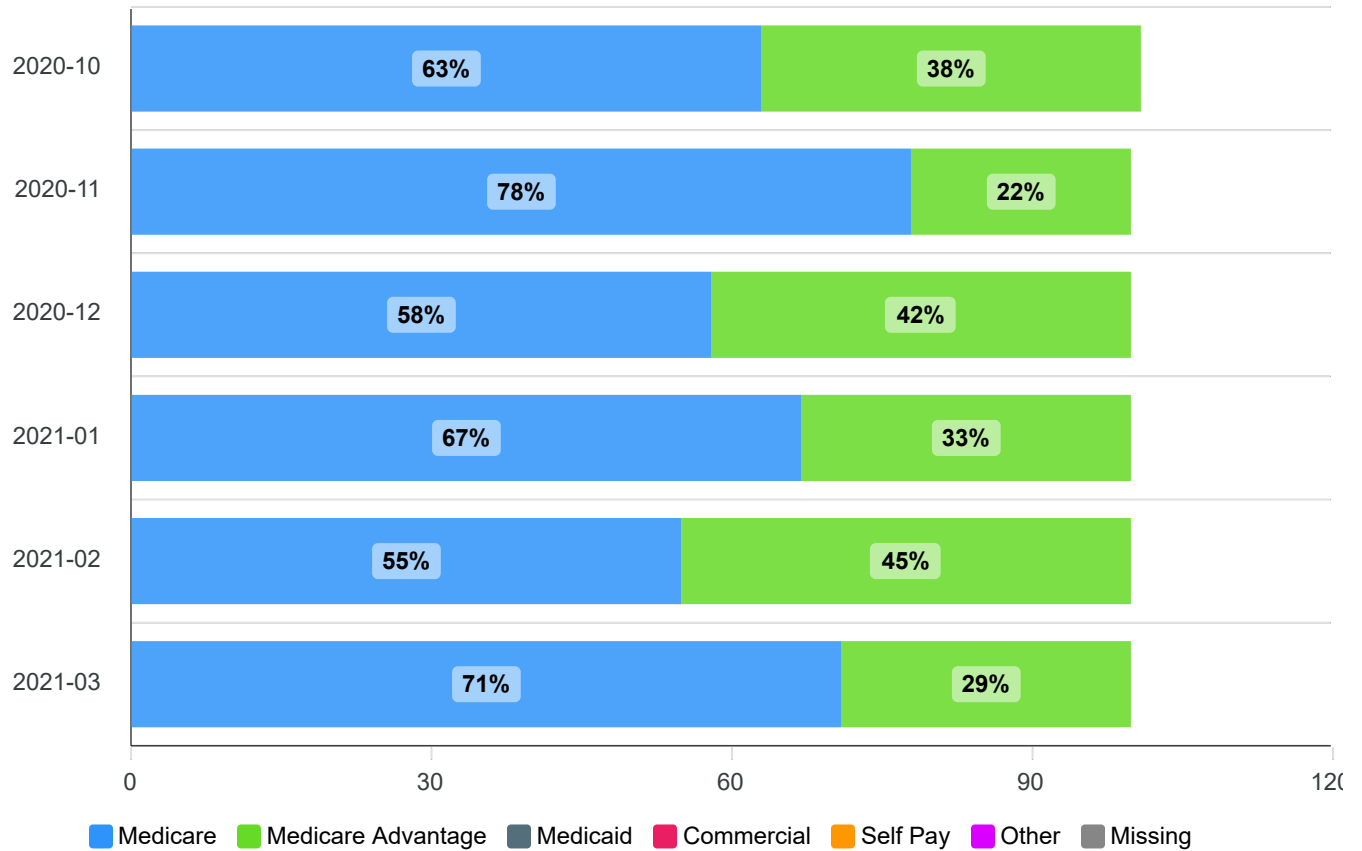
Percent of discharges by where they were admitted from immediately before their admission to swing bed



Primary Payor as a % of Discharges

Time period (Oct 2020 - Apr 2021)

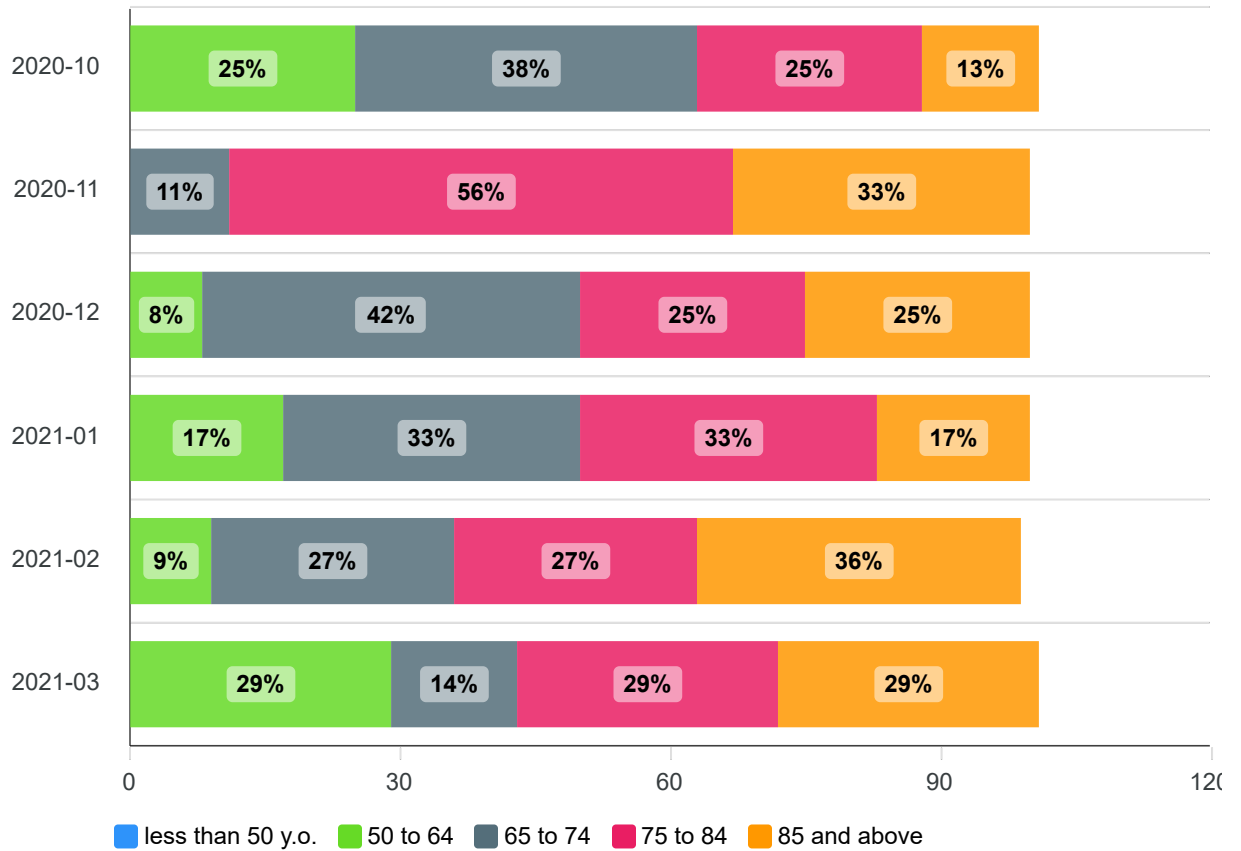
Percent of discharges by type of payor



Age Group as a % of Discharges

Time period (Oct 2020 - Apr 2021)

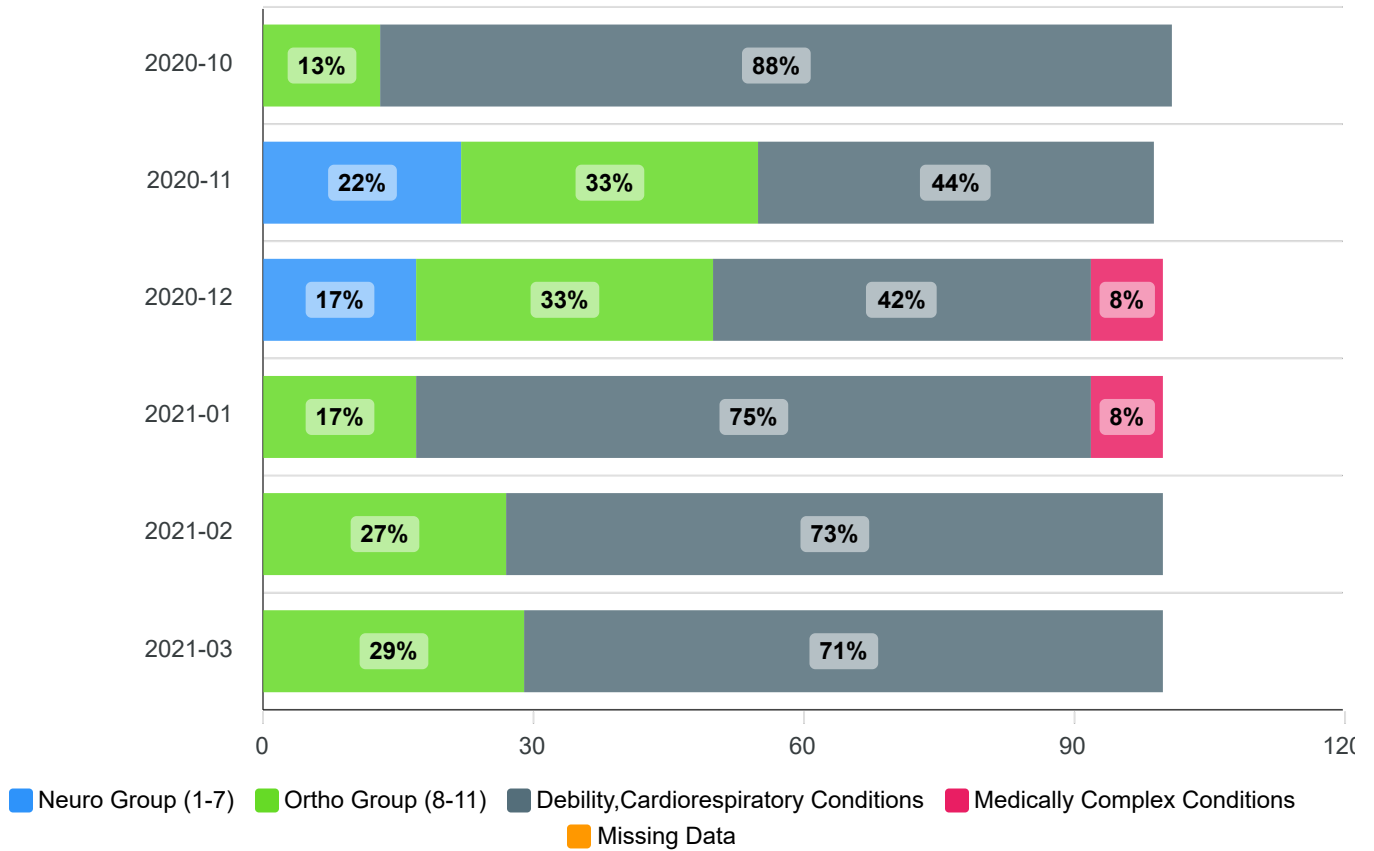
Percent of discharges by specific age group



Primary Medical Condition as a % of Discharges

Time period (Oct 2020 - Apr 2021)

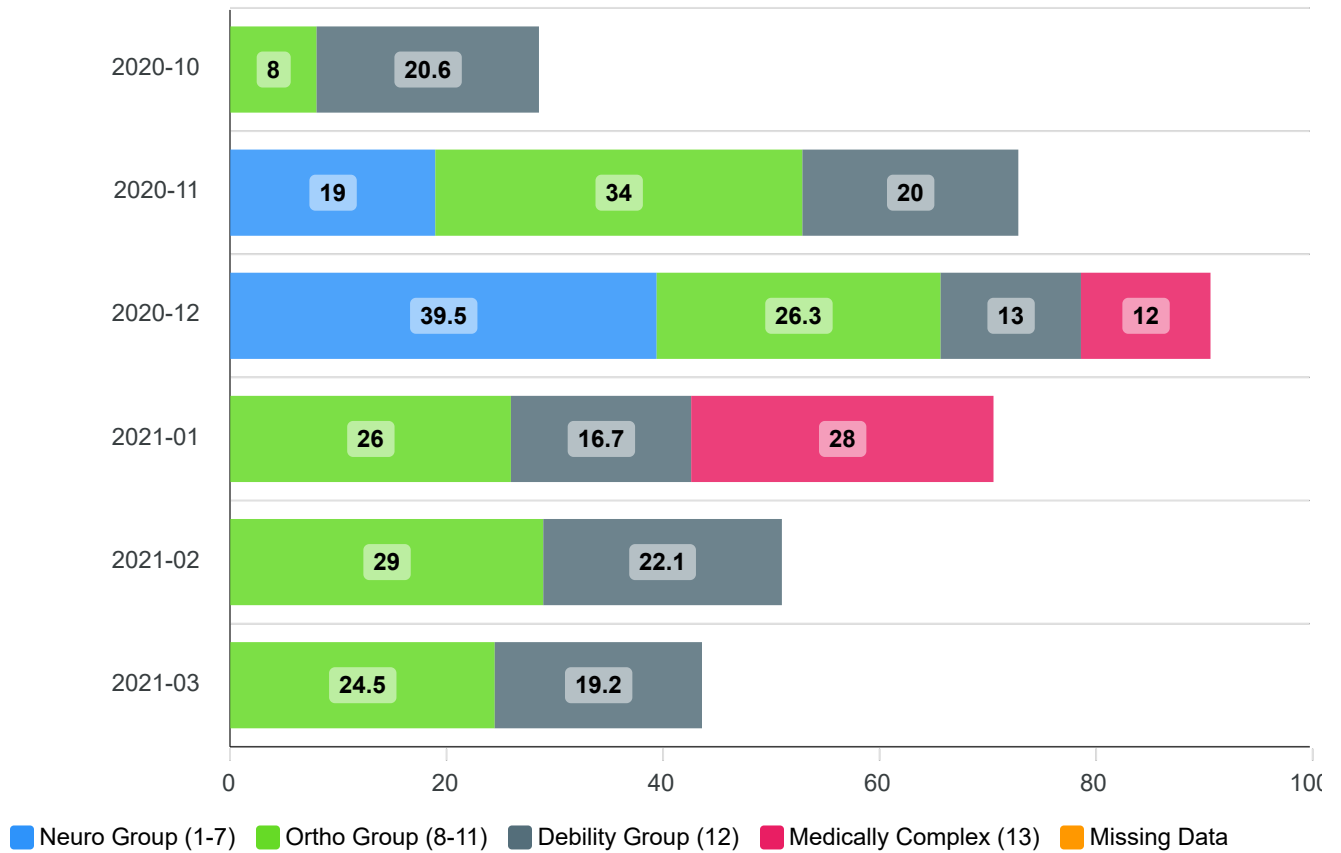
Percent of discharges by Primary Medical Condition groups



ALOS by Primary Medical Condition

Time period (Oct 2020 - Apr 2021)

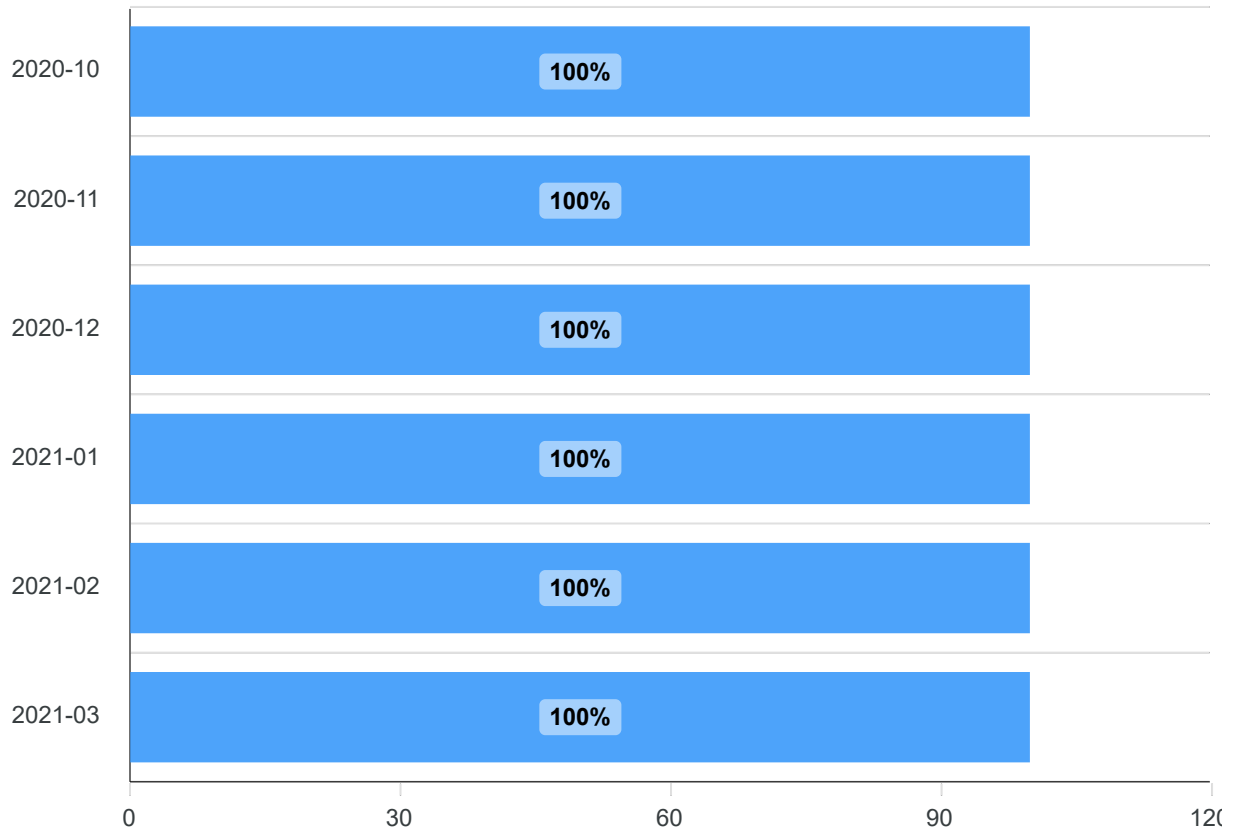
LOS is calculated for each patient (discharge date - admission date) for each Primary Medical Condition and then is averaged for the ALOS



Discharges by Therapy Received

Time period (Oct 2020 - Apr 2021)

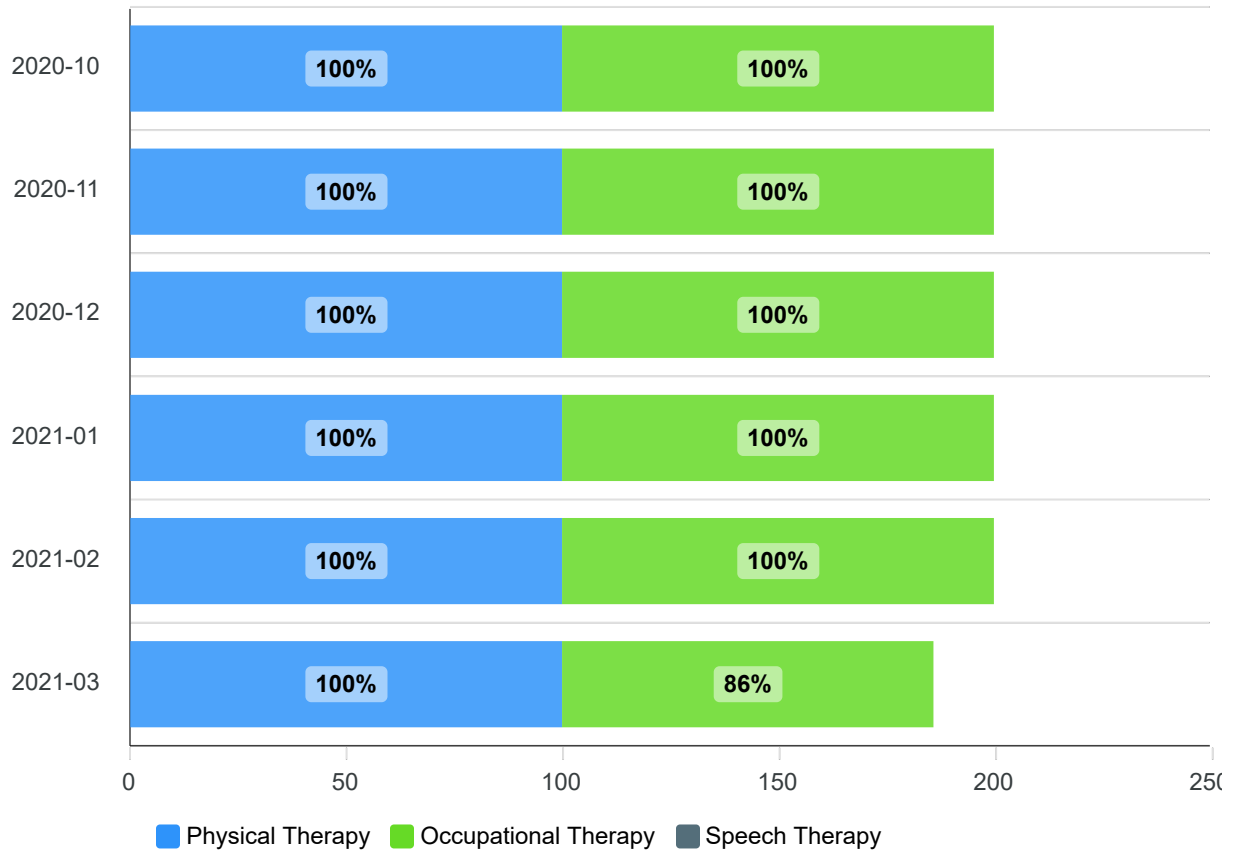
Percent of discharges that received therapy



Discharges by Therapy Discipline Received

Time period (Oct 2020 - Apr 2021)

Percent of discharges that received therapy by type of therapy



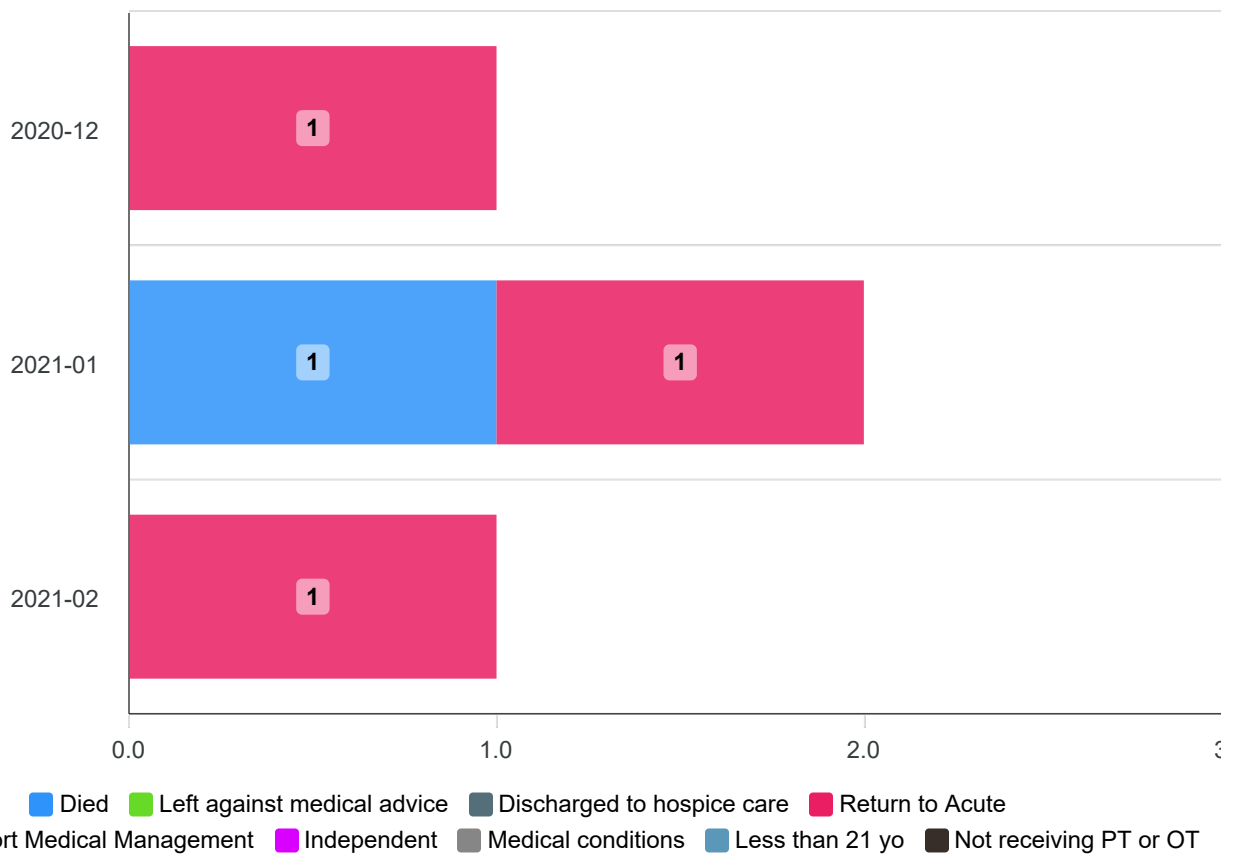
Exclusions by Reason

Time period (Oct 2020 - Apr 2021)

Exclusions are an aspect of all measures except for the Self-Care & Mobility Performance measures where certain patients are excluded.

Medical Conditions: coma/persistent vegetative state; complete tetraplegia; locked-in syndrome; severe anoxic brain damage, cerebral edema, or compression of brain.

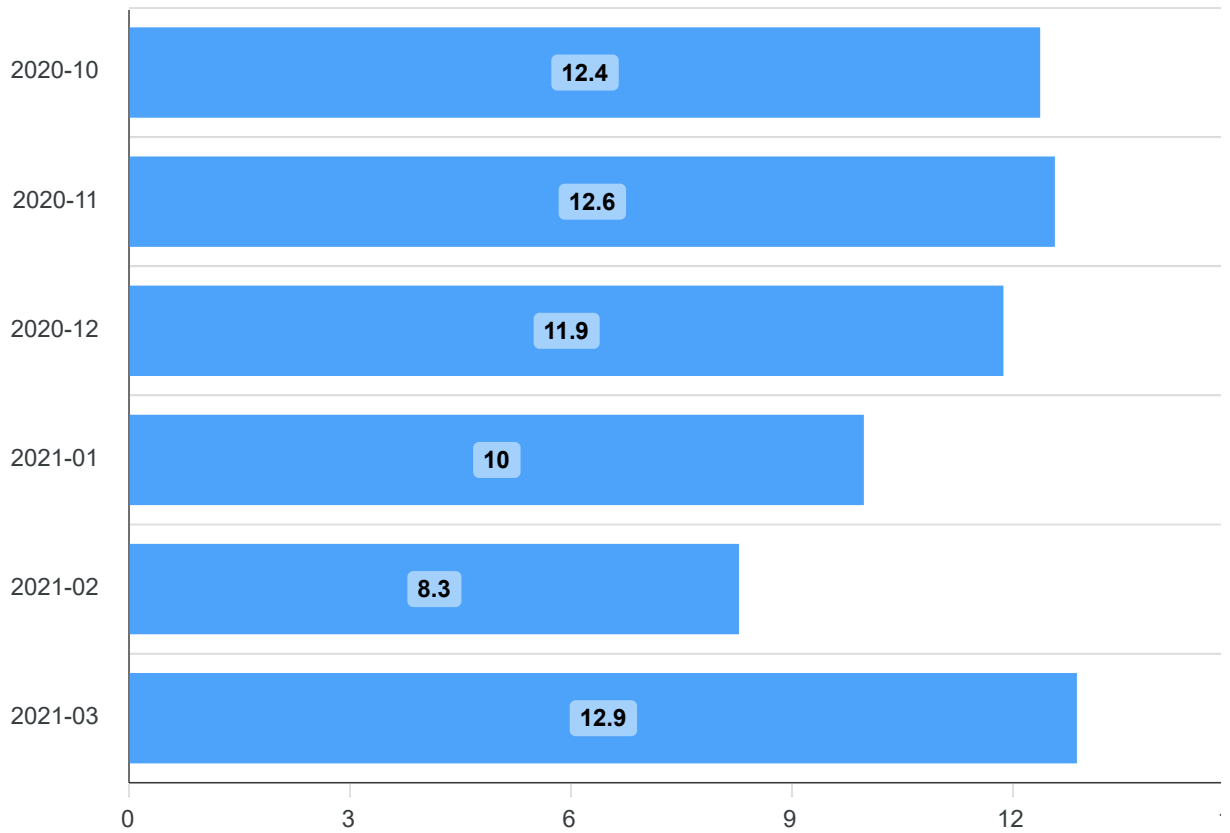
Planned Short Medical Management: stay less than 3 days



Performance Improvement Score - Self Care (Without Exclusions)

Time period (Oct 2020 - Apr 2021)

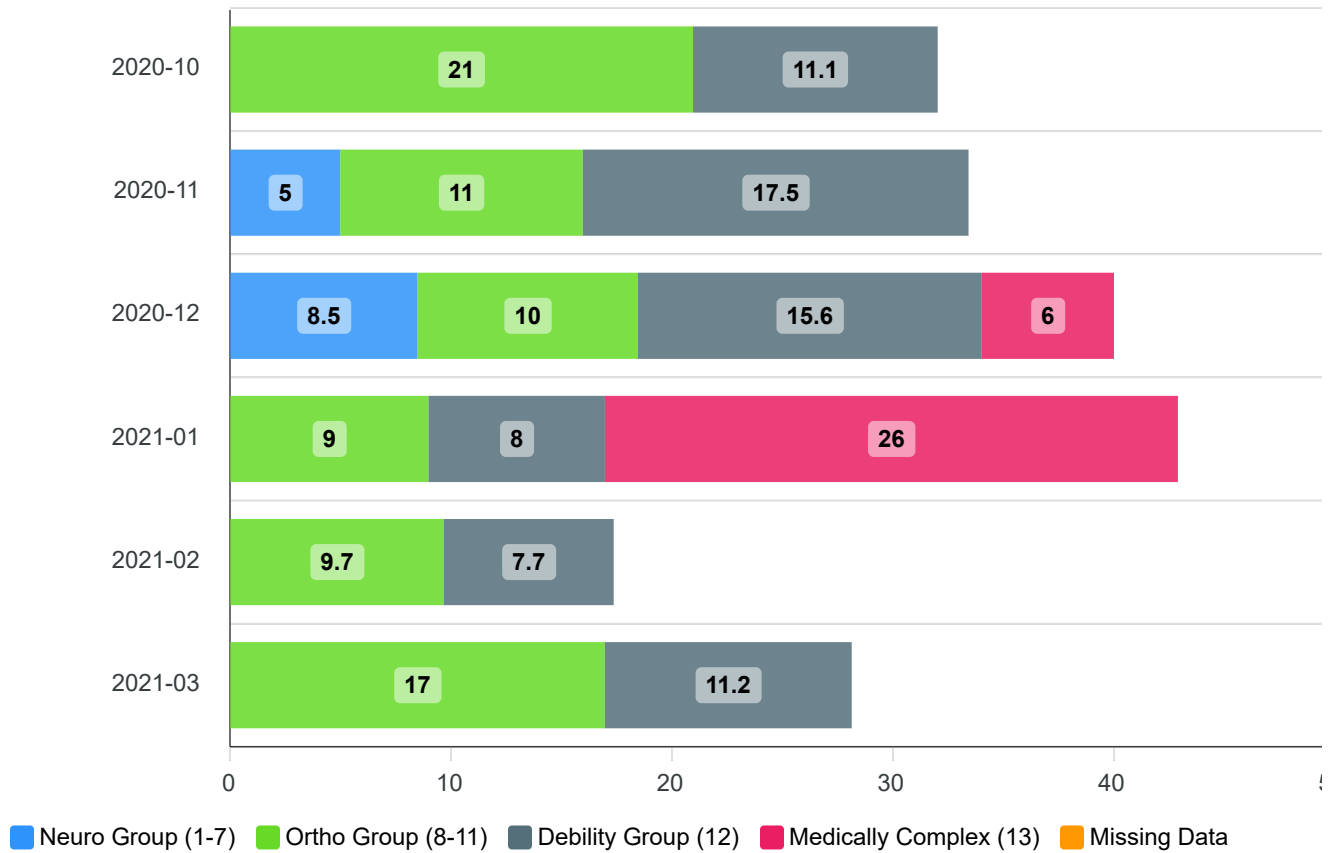
Score is the difference between admission and discharge scores for each Self-Care activity summed and divided by number of discharges without excluded patients



Self-Care Improvement by Primary Medical Condition (Without Exclusions)

Time period (Oct 2020 - Apr 2021)

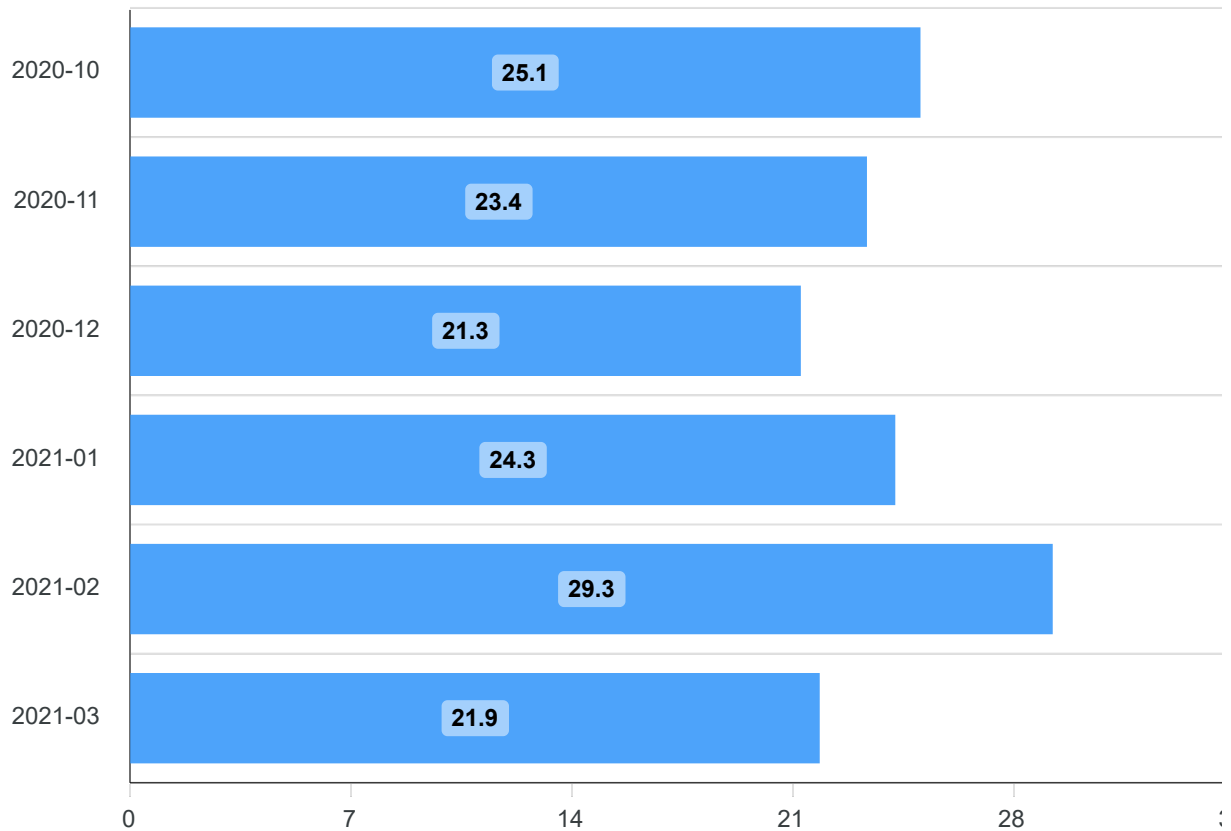
Score is the difference between admission and discharge scores for each self-care activity summed and divided by number of discharges without excluded patients for each primary medical condition



Performance Improvement Score - Mobility (Without Exclusions)

Time period (Oct 2020 - Apr 2021)

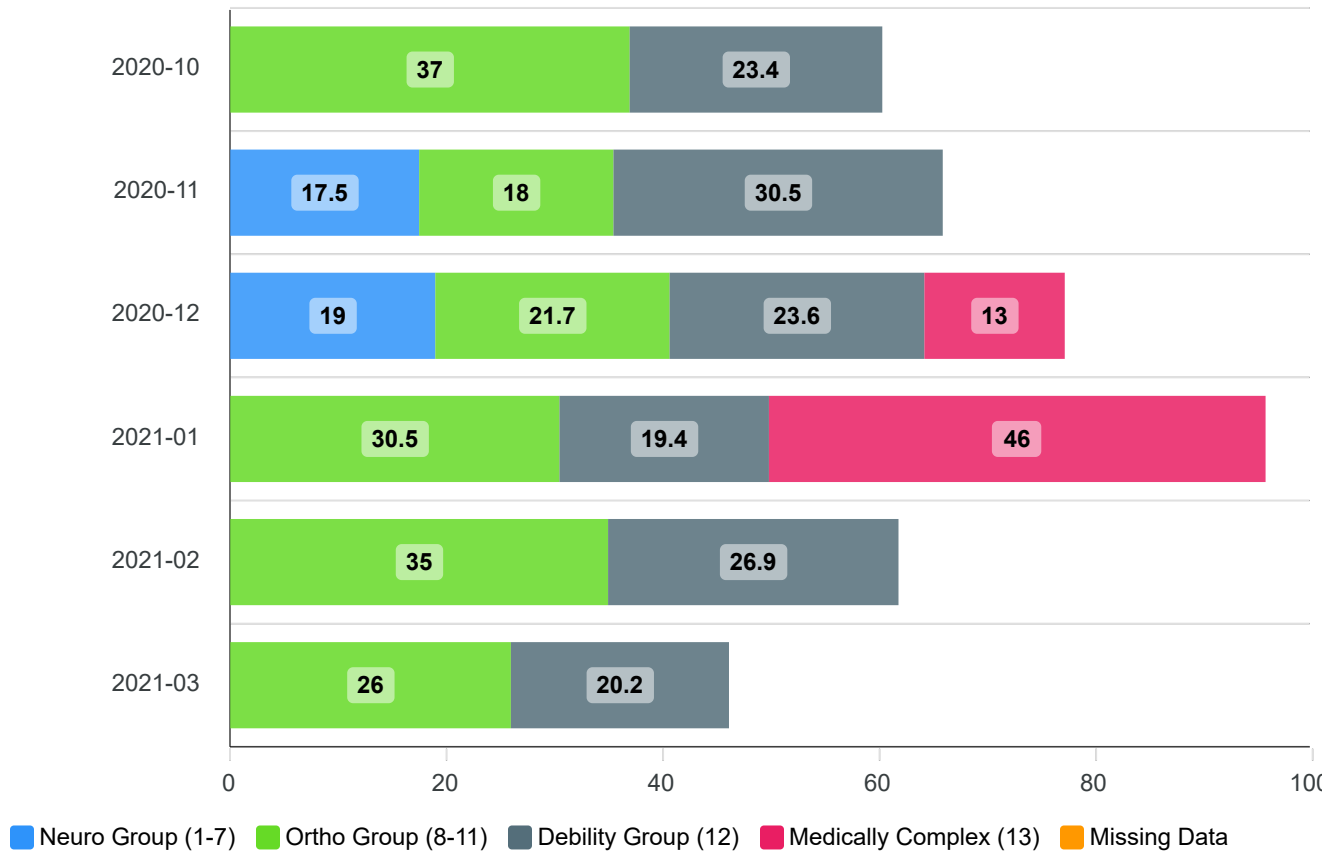
Score is the difference between admission and discharge scores for each Mobility activity summed and divided by number of discharges without excluded patients



Mobility Improvement by Primary Medical Condition (Without Exclusions)

Time period (Oct 2020 - Apr 2021)

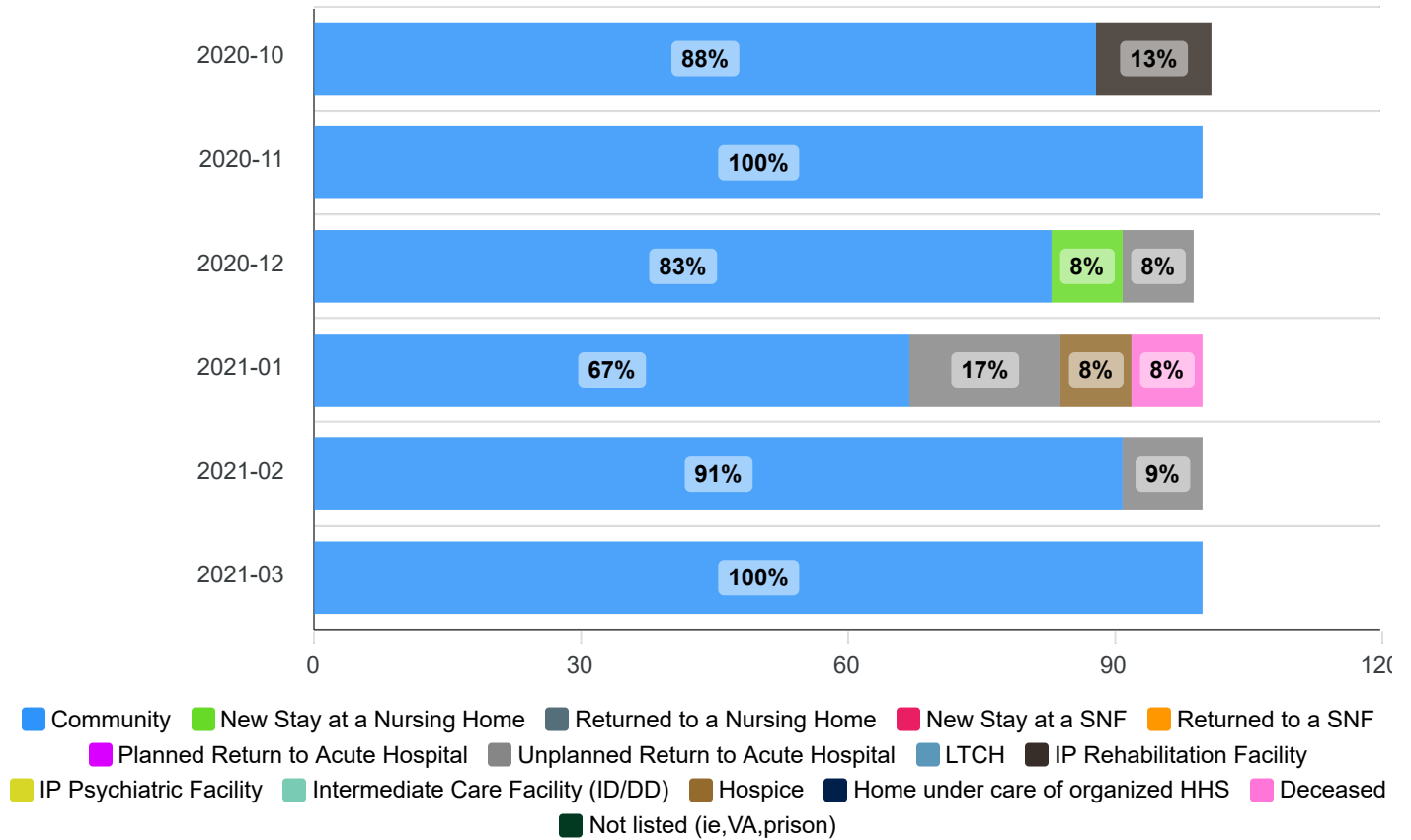
Score is the difference between admission and discharge scores for each mobility activity summed and divided by number of discharges without excluded patients for each primary medical condition



Discharges by Discharge Disposition

Time period (Oct 2020 - Apr 2021)

Percent of all discharges by disposition



Post Swing Bed 30 Day Discharge Follow-up

Time period (Oct 2020 - Apr 2021)

Percent of all discharges that received a post 30-day follow up call

