

WVU Medicine Emergency Management Affinity Group

Elizabeth Garrasi – JW Ruby Memorial Hospital

Brenna Earnest – Potomac Valley Hospital

Donnie Grubb – Berkeley & Jefferson Medical Centers

Chris DeBarr – St. Joseph's Hospital

Emergency Management Affinity Group

The purpose of this affinity group is to establish standardized strategies for advancing emergency preparedness through coordination and integration of activities necessary to build, sustain and improve the capabilities across the healthcare system. These activities will allow our organization to mitigate against, prepare for, respond to and recover from all threatened or actual hazards. The emergency preparedness affinity group will take a comprehensive, risk-driven and professional approach to protect the healthcare system from emergencies and disasters that cause the disruption of normal operations.

EM Affinity Group Goals/Objectives



Sharing Regulatory Survey
Outcomes/Reviews



Practice
Standardization

EM Documentation Tools
Exercise/Drill Forms
Education and Training



EM Policies, Plans & Procedures

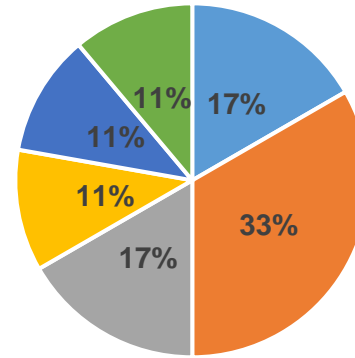


Best Practice/Program Showcase

Education & Training – Practice Standardization

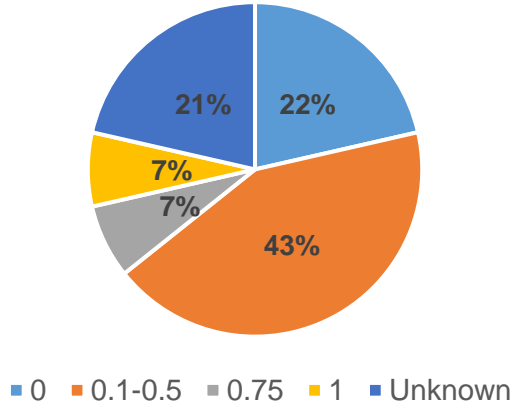
- A role is considered primary if respondent indicated it was the majority of their role, or if their role was equally split among others.
- 10 respondents of 14 (71%) stated they served in at least two roles, regardless of what their primary role is.
- 3 respondents (21%) have more than two roles they oversee.
- Diverse backgrounds, varied types of education, one goal

Primary Roles of System Emergency Management Professionals

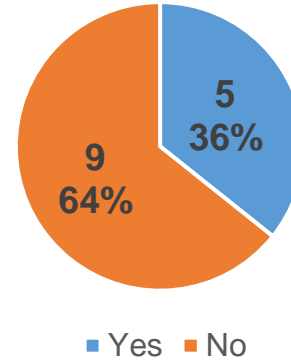


- Emergency Management
- Safety
- Facilities/Environmental Services
- Employee Health
- Clinical/Patient Services
- Risk

FTE Dedicated to Emergency Management



Is there any Emergency Management specific education required for your role?



Education & Training

Subcommittees —

Policies, Plans, Procedures

Critical Access Hospitals

Education

Disaster Critical Care Transport Coordination

Medical, Security, Facility, Plain Language Alert

Disaster Plans



Quarterly On-Site Meetings

Best Practice/ Program Showcase



September 2022 – Berkeley Medical Center

Host Facility Tour

EM Initiatives – LEPC & Community Partnerships

LEPC & Community Partnerships

- First aid training for local law enforcement
- Tactical Trauma Kits



LEPC & Community Partnerships

- Stop the Bleed Program
- Training for school staff
- Supplied all 32 schools and 1 Private School in Berkeley County STB kits



LEPC & Community Partnerships

- I-81 Safety Initiative
- Funding for signage



LEPC & Community Partnerships

- MOU with Berkeley County Commission
- Berkeley Medical Center to maintain medical supplies
- Resource for system



Questions / Thoughts?

Preparation through education is
less costly than learning through
tragedy.

— *Max Mayfield* —